

COPYRIGHT 1895.

# Westinghouse Electric & Manufacturing Co.

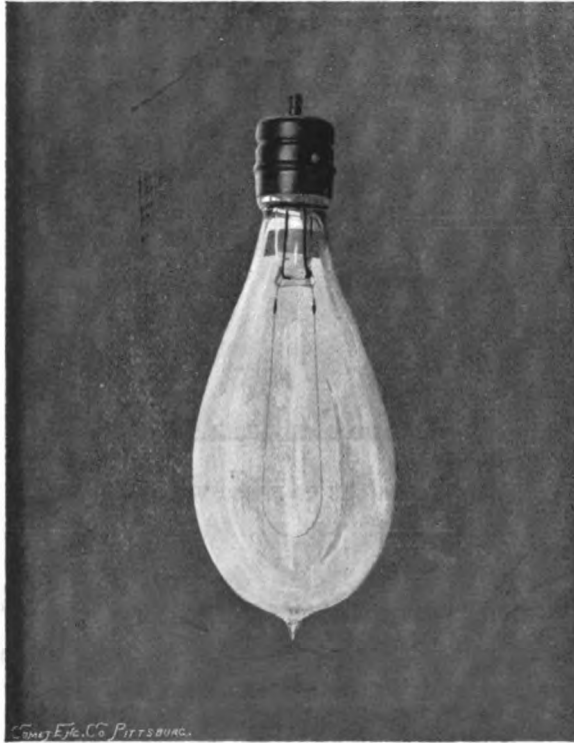
PITTSBURG, PA.

Catalogue No. 97.  
Circular No. 6.

Sept., 1895.

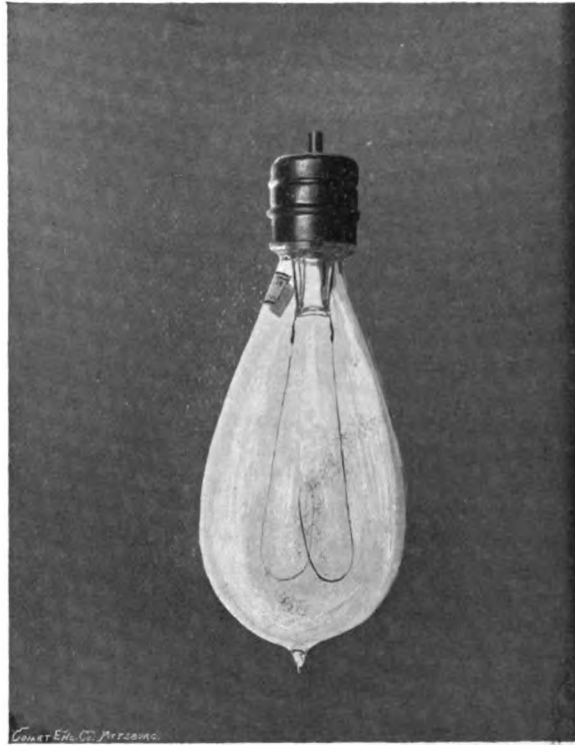
## Sawyer-Man Incandescent Lamps.

We present in the following pages a few illustrations of the Sawyer-Man incandescent lamps which we are now manufacturing under improved methods.



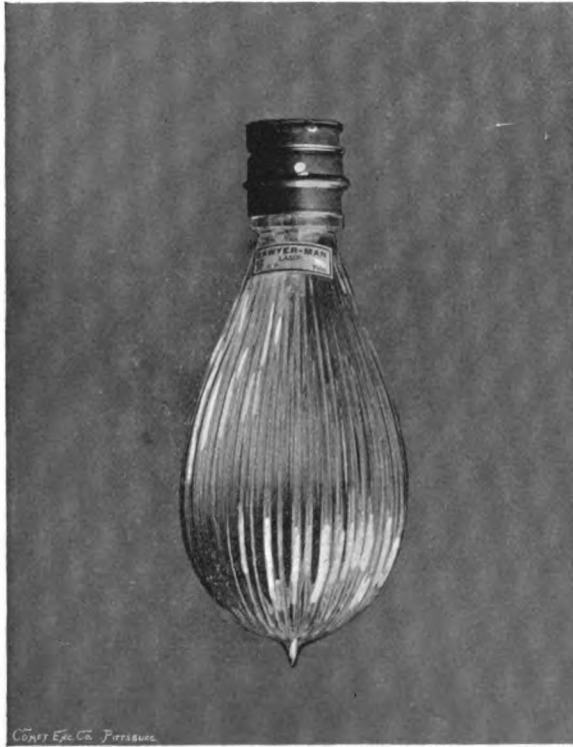
SAWYER-MAN 16 C. P. 50 VOLT LAMP.

Our lamp factory has been refitted for the production of Sawyer-Man lamps on a very large scale, so that we can assure our customers of the prompt shipment of any orders with which we may be favored.



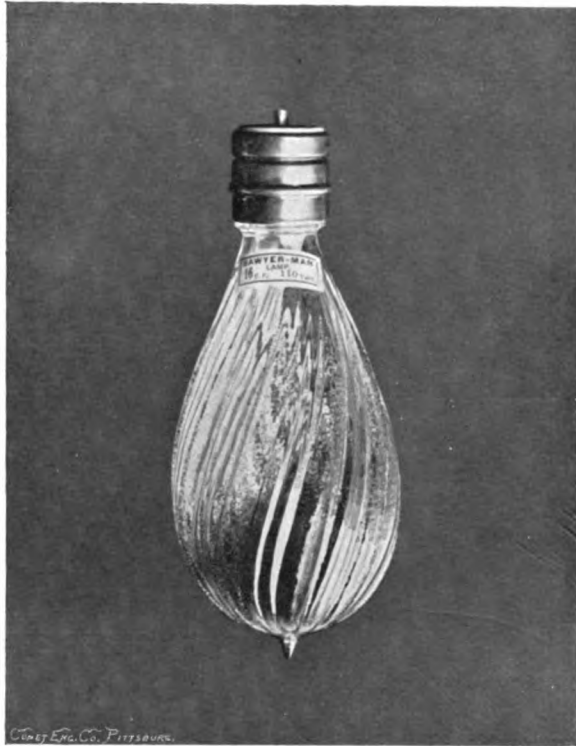
**SAWYER-MAN 16 C. P. 100 VOLT LAMP.**

Purchasers have long recognized the fact that the name "Sawyer-Man" on incandescent lamps was the best possible guarantee of superior quality, and this fact is equally true at the present date, as it is our aim to produce lamps of the very highest quality in every respect.



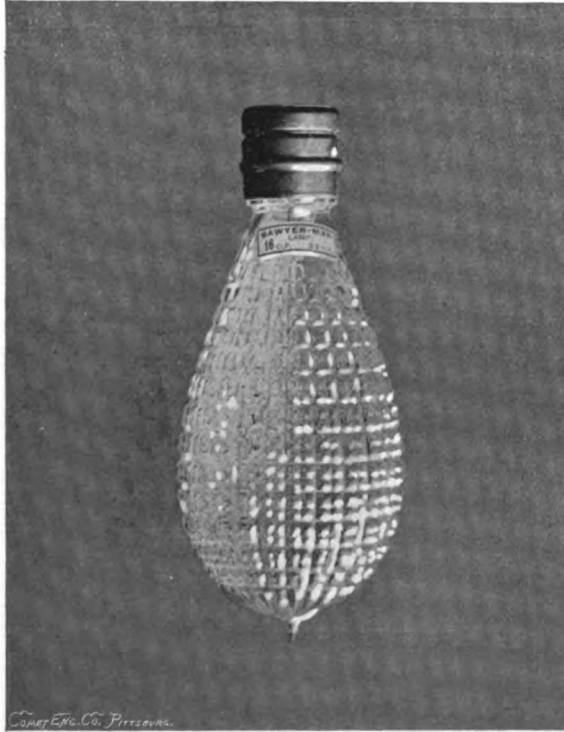
**SAWYER-MAN ORNAMENTAL LAMP—STYLE 201.**

We direct attention to the four styles of Sawyer-Man ornamental lamps shown in the illustrations. These lamps are attractive in appearance, and we suggest that when making up your next order you select a few for inspection and trial.



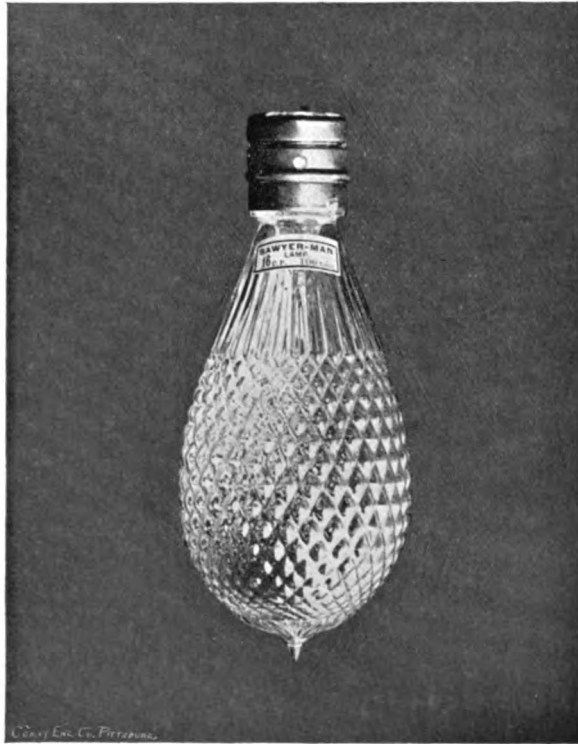
SAWYER-MAN ORNAMENTAL LAMP—STYLE 204.

Our "Combination" base fits both Sawyer-Man and Edison sockets, and may be used in either of these styles without any change whatever. This will be found a great convenience in many cases.



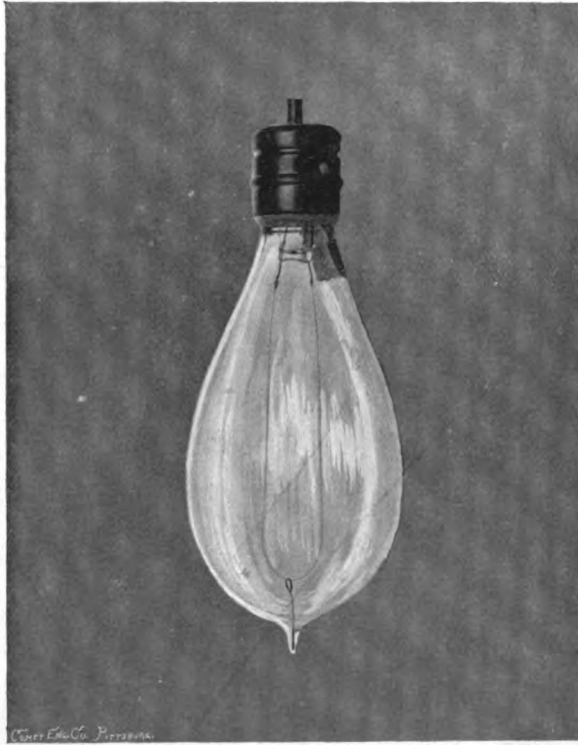
SAWYER-MAN ORNAMENTAL LAMP—STYLE 205.

**Efficiency.**—In our long experience we have found in a majority of cases that lamps of the 100 volt class which have an efficiency of 3.6 watts per candle give the best general results, and for the 50 volt an efficiency of 3.1 watts per candle. We have, therefore, adopted these respective efficiencies as our standards and unless otherwise requested such are furnished on all orders.



**SAWYER-MAN ORNAMENTAL LAMP—STYLE 206.**

We, however, manufacture lamps of various efficiencies and are thus prepared to fill the requirements of any class of service. We would be glad to receive your specifications and can assure you that the lamps will give the best possible results.



16 C. P. ANCHORED FILAMENT S.-M. RAILWAY LAMP.

**Street Car Lamps.**—We illustrate our standard anchored filament Sawyer-Man Street Car Lamps which are found to give exceptionally good results under the most trying conditions of street railway service. We also make the same lamp without the anchor, having a coiled filament which we recommend for use where the vibration is not too severe.



"D" BASE



COMBINATION BASE



"C" BASE



"A" BASE



"S" BASE



"E" BASE



"W" BASE



"B" BASE



"M" BASE



"F" BASE



## LAMP BASES.

---

“COMBINATION” BASE.—For Sawyer-Man or Edison Sockets.

“A” BASE.—For Sawyer-Man Sockets.

“B” BASE.—For Thomson-Houston Sockets.

“C” BASE.—For United States Sockets.

“D” BASE.—For Brush-Swan Sockets.

“E” BASE.—For Edison Sockets.

“F” BASE.—For Hawkeye or Queen City Sockets.

“M” BASE.—For Mather or Perkins Sockets.

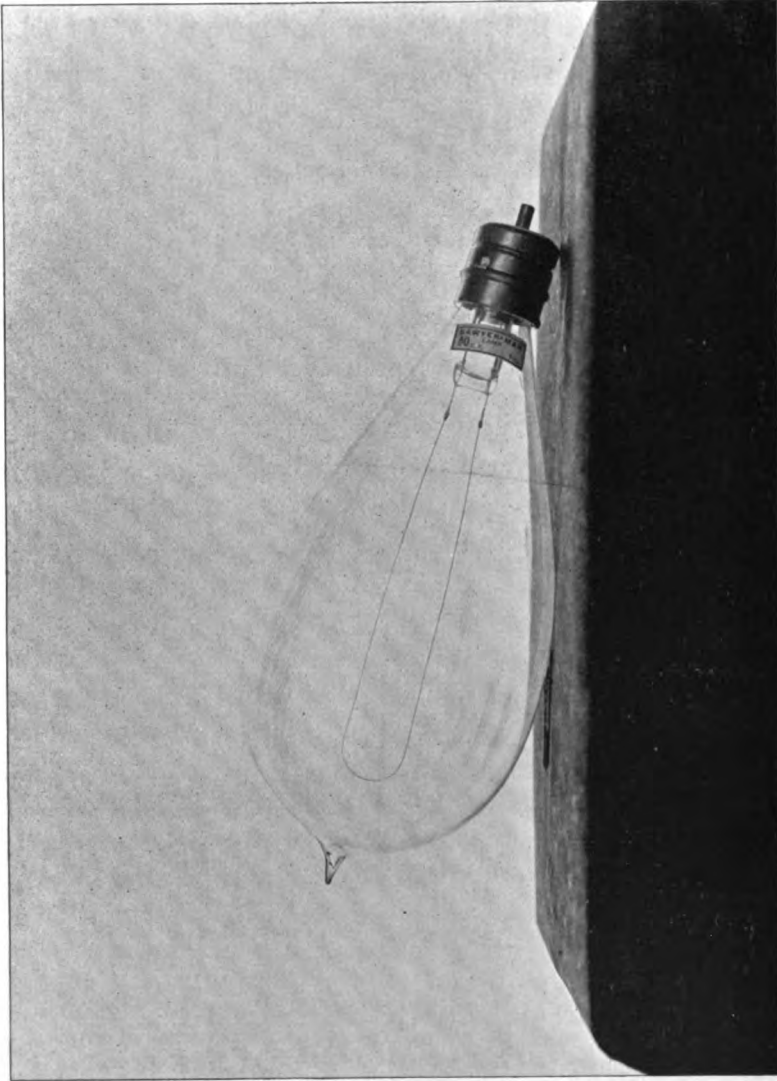
“S” BASE.—For Schaefer or National Sockets.

“W” BASE.—For Westinghouse Stopper Sockets.

We can furnish lamps fitted with any of the above styles of base.

---

Sawyer	Man	Lamps.
Secure	More	Light.
Secure	Minimum	Load.
Secure	Maximum	Life.
Save	Money	Largely.



**SAWYER-MAN 50 C. P. LAMP.**

## PRICE LIST.

---

### Plain Lamps.

8, 10 and 16 candle power, . . . . .	25c.
20 and 25       “       “ . . . . .	30c.
32               “       “ . . . . .	38c.
50               “       “ . . . . .	65c.
16 C. P. Street Car Lamps, coiled filaments, . . . . .	25c.
16 “       “       “       “ anchored filaments, . . . . .	28c.

### Ornamental Lamps.

8, 10 and 16 candle power, . . . . .	30c.
20 and 25       “       “ . . . . .	35c.

### Etched Lamps.

We can furnish any of the above styles of lamps etched or frosted for 3½c. each, net, extra.

### Colored Lamps.

We can furnish any of the above lamps superficially colored for 5c. each, net, extra.

### Standard Packages.

We have established the following list of standard packages and urge our customers to order in quantities conforming to them, as we give special discounts in such cases :

8, 10 and 16 C. P. Lamps, . . . . .	250 per barrel.
20 and 25       “       “ . . . . .	200 “   “
32               “       “ . . . . .	175 “   “
50               “       “ . . . . .	75 “   “

ALL PRICES F. O. B. CARS ALLEGHENY, PA.  
ALL PRICES SUBJECT TO CHANGE WITHOUT NOTICE.  
DISCOUNTS FURNISHED ON APPLICATION.

---

NOTICE.—When ordering lamps always specify the voltage and base desired.

**Write to our nearest district office.**

**WESTINGHOUSE ELECTRIC & MANUFACTURING CO.**

---

**NEW YORK, 120 Broadway.**

**BOSTON, Exchange Building.**

**CHICAGO, New York Life Building.**

**TACOMA, WASH., 102 S. 10th Street.**

**PITTSBURG, Westinghouse Building.**

**PHILADELPHIA, Girard Building.**

**ST. LOUIS, American Central Building.**

**CHARLOTTE, N. C., 36-38 College St.**

**SYRACUSE N. Y., Bastable Building.**

**SAN FRANCISCO, Mills Building.**